

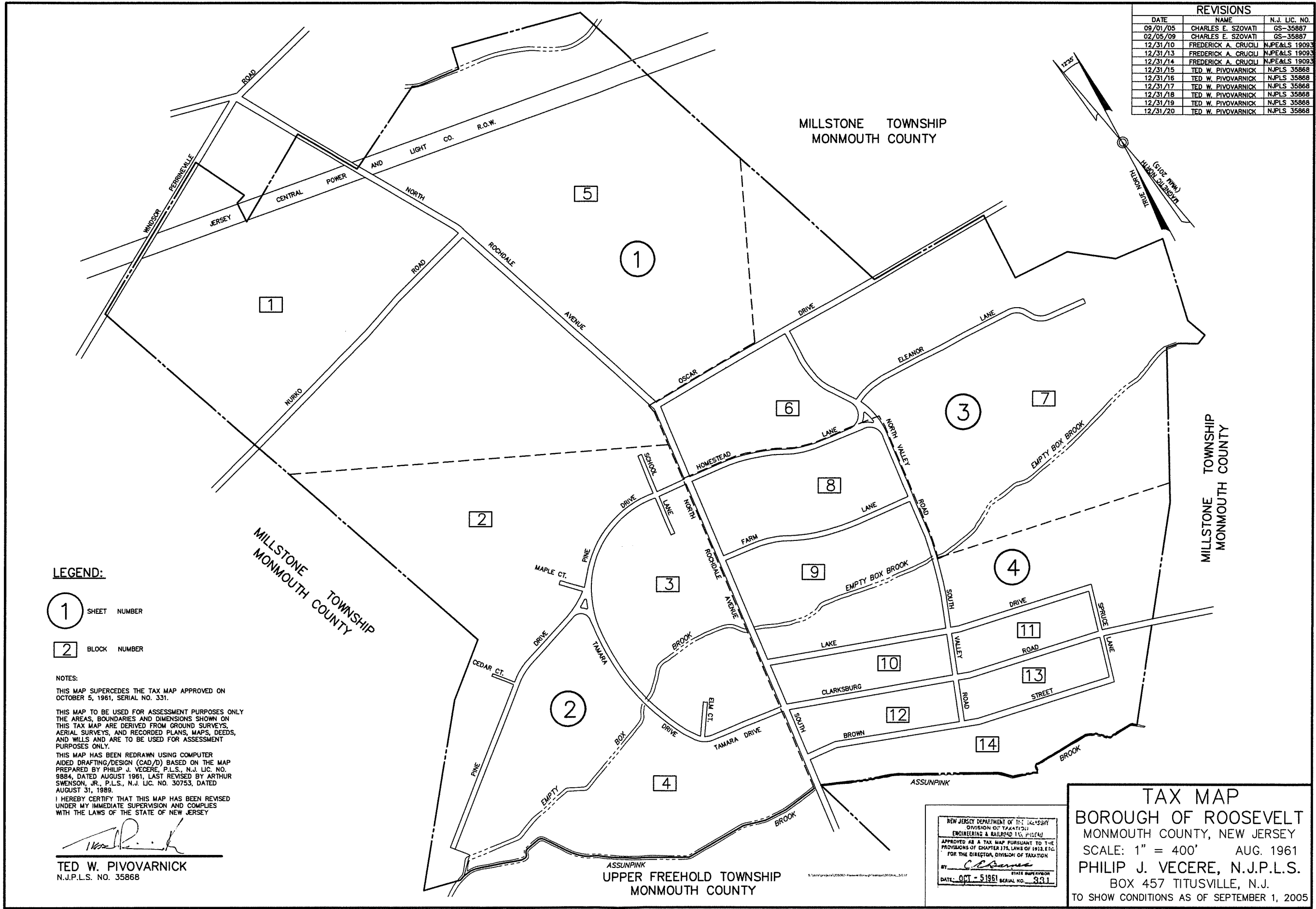
TAX MAPS

BOROUGH OF ROOSEVELT

Monmouth County, New Jersey

KEY MAP

REVISIONS		
DATE	NAME	N.J. LIC. NO.
09/01/05	CHARLES E. SZOVATI	GS-35887
02/05/09	CHARLES E. SZOVATI	GS-35887
12/31/10	FREDERICK A. CRUCIJJ	N.J.P.E&L 19093
12/31/13	FREDERICK A. CRUCIJJ	N.J.P.E&L 19093
12/31/14	FREDERICK A. CRUCIJJ	N.J.P.E&L 19093
12/31/15	TED W. PIVOVARNICK	N.J.PLS 35868
12/31/16	TED W. PIVOVARNICK	N.J.PLS 35868
12/31/17	TED W. PIVOVARNICK	N.J.PLS 35868
12/31/18	TED W. PIVOVARNICK	N.J.PLS 35868
12/31/19	TED W. PIVOVARNICK	N.J.PLS 35868
12/31/20	TED W. PIVOVARNICK	N.J.PLS 35868



LEGEND:

① SHEET NUMBER

□ BLOCK NUMBER

NOTES:

THIS MAP SUPERCEDES THE TAX MAP APPROVED ON OCTOBER 5, 1961, SERIAL NO. 331.

THIS MAP TO BE USED FOR ASSESSMENT PURPOSES ONLY THE AREAS, BOUNDARIES AND DIMENSIONS SHOWN ON THIS TAX MAP ARE DERIVED FROM GROUND SURVEYS, AERIAL SURVEYS, AND RECORDED PLANS, MAPS, DEEDS, AND WILLS AND ARE TO BE USED FOR ASSESSMENT PURPOSES ONLY.

THIS MAP HAS BEEN REDRAWN USING COMPUTER AIDED DRAFTING/DESIGN (CAD/D) BASED ON THE MAP PREPARED BY PHILIP J. VECERE, P.L.S., N.J. LIC. NO. 9884, DATED AUGUST 1961, LAST REVISED BY ARTHUR SWENSON, JR., P.L.S., N.J. LIC. NO. 30753, DATED AUGUST 31, 1989.

I HEREBY CERTIFY THAT THIS MAP HAS BEEN REVISED UNDER MY IMMEDIATE SUPERVISION AND COMPLIES WITH THE LAWS OF THE STATE OF NEW JERSEY

Ted W. Pivovarnick

TED W. PIVOVARNICK
N.J.P.L.S. NO. 35868

NEW JERSEY DEPARTMENT OF THE TREASURY
DIVISION OF TAXATION
ENGINEERING & RAILROAD TAX PRACTICE
APPROVED AS A TAX MAP PURSUANT TO THE
PROVISIONS OF CHAPTER 175, LAWS OF 1912, ETC.
FOR THE DIRECTOR, DIVISION OF TAXATION
BY: *C. E. ...*
STATE SUPERVISOR
DATE: OCT - 5 1961 SERIAL NO. 331

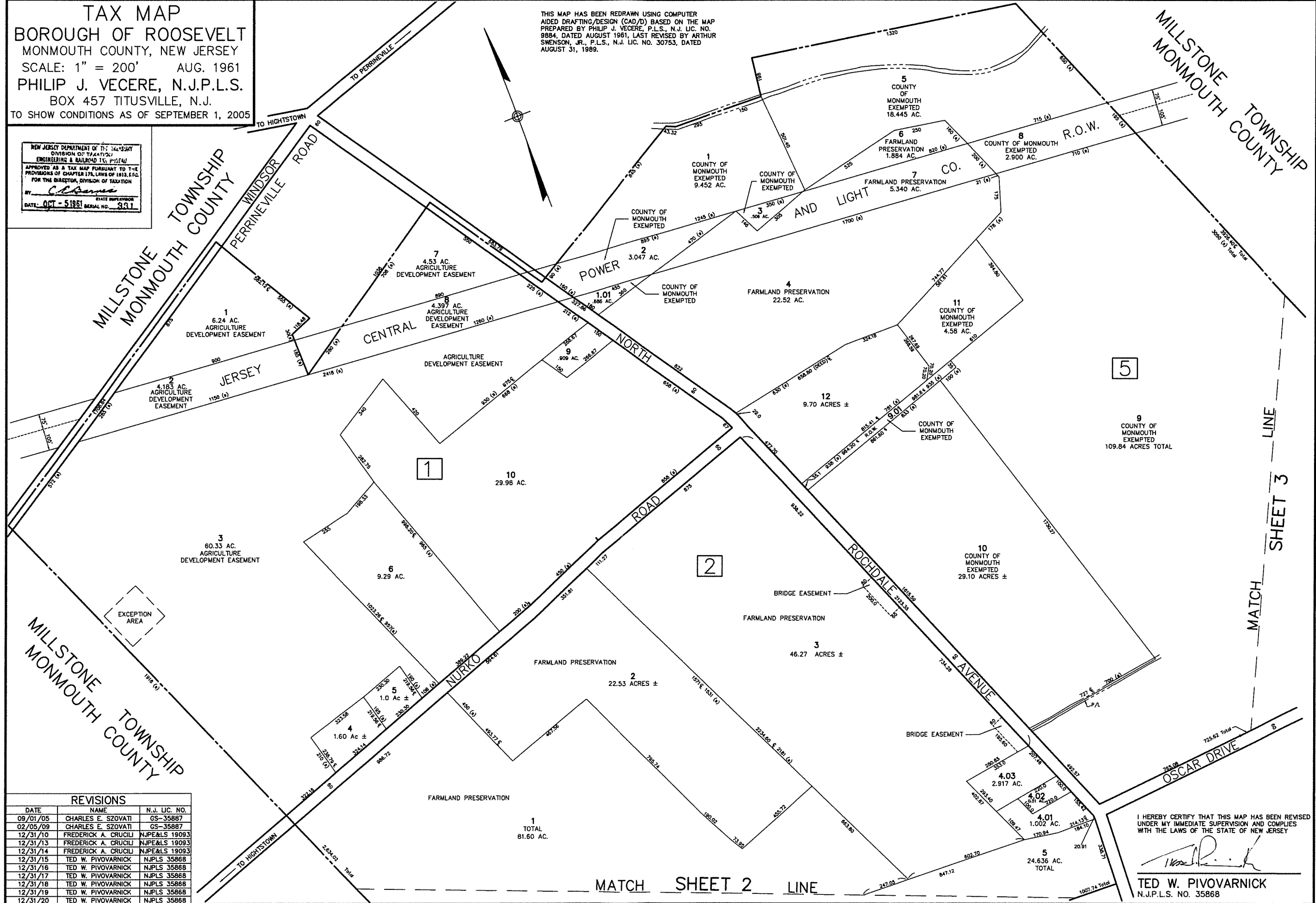
TAX MAP
BOROUGH OF ROOSEVELT
MONMOUTH COUNTY, NEW JERSEY
SCALE: 1" = 400' AUG. 1961
PHILIP J. VECERE, N.J.P.L.S.
BOX 457 TITUSVILLE, N.J.
TO SHOW CONDITIONS AS OF SEPTEMBER 1, 2005

KEY MAP

TAX MAP
BOROUGH OF ROOSEVELT
 MONMOUTH COUNTY, NEW JERSEY
 SCALE: 1" = 200' AUG. 1961
 PHILIP J. VECERE, N.J.P.L.S.
 BOX 457 TITUSVILLE, N.J.
 TO SHOW CONDITIONS AS OF SEPTEMBER 1, 2005

THIS MAP HAS BEEN REDRAWN USING COMPUTER AIDED DRAFTING/DESIGN (CAD/D) BASED ON THE MAP PREPARED BY PHILIP J. VECERE, P.L.S., N.J. LIC. NO. 9884, DATED AUGUST 1961. LAST REVISED BY ARTHUR SWENSON, JR., P.L.S., N.J. LIC. NO. 30753, DATED AUGUST 31, 1989.

NEW JERSEY DEPARTMENT OF TREASURY
 DIVISION OF TAXATION
 ENGINEERING & RAILROAD TAX MAPS
 APPROVED AS A TAX MAP PURSUANT TO THE PROVISIONS OF CHAPTER 174, L.I.C. NO. 1913, E.T.C. FOR THE DIRECTOR, DIVISION OF TAXATION
 BY: *C. E. Vecere*
 DATE: OCT - 5 1961 SERIAL NO. 931

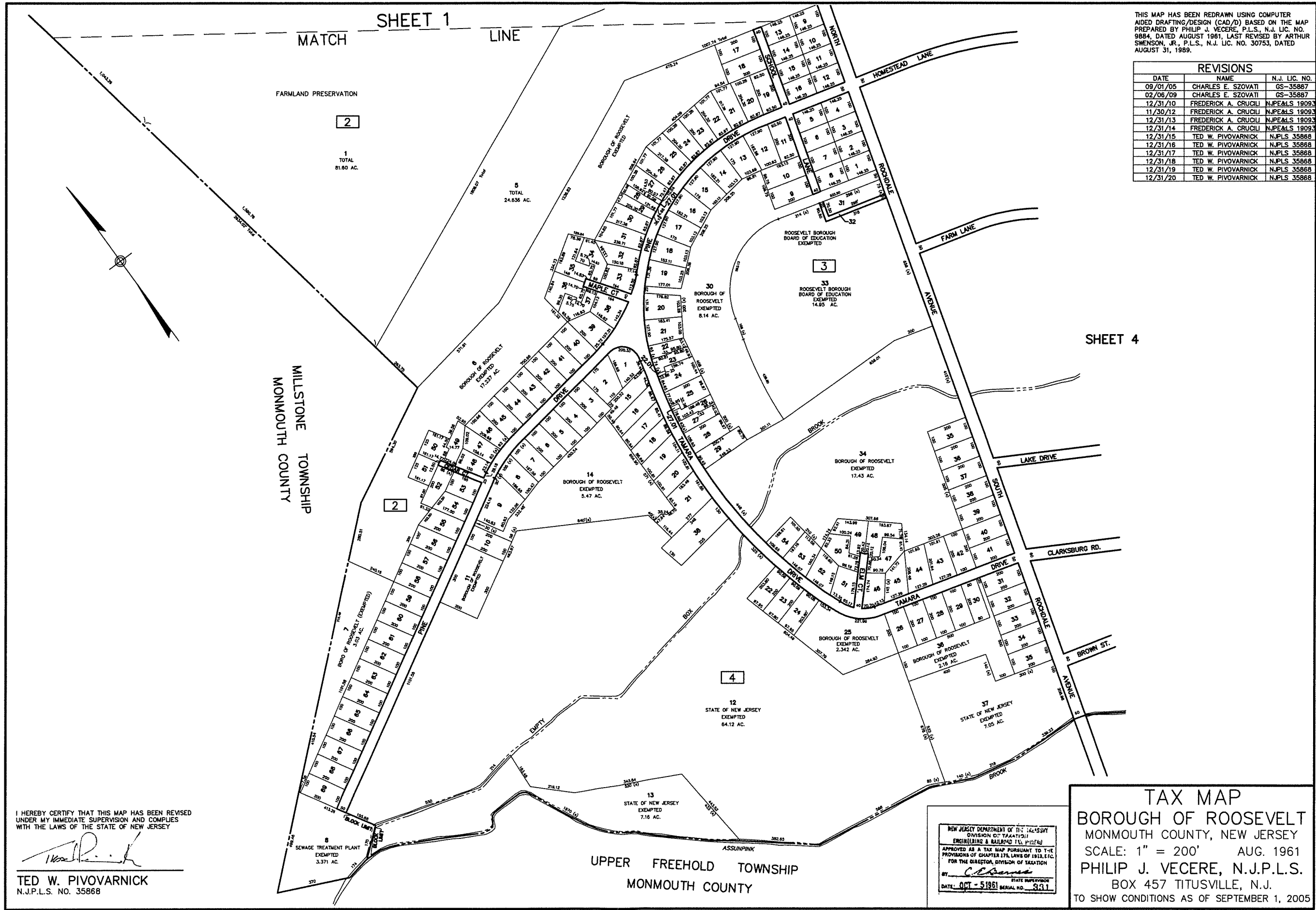


REVISIONS		
DATE	NAME	N.J. LIC. NO.
09/01/05	CHARLES E. SZOVATI	GS-35887
02/05/09	CHARLES E. SZOVATI	GS-35887
12/31/10	FREDERICK A. CRUCILI	NJPE&LS 19093
12/31/13	FREDERICK A. CRUCILI	NJPE&LS 19093
12/31/14	FREDERICK A. CRUCILI	NJPE&LS 19093
12/31/15	TED W. PIVOVARNICK	NJPLS 35868
12/31/16	TED W. PIVOVARNICK	NJPLS 35868
12/31/17	TED W. PIVOVARNICK	NJPLS 35868
12/31/18	TED W. PIVOVARNICK	NJPLS 35868
12/31/19	TED W. PIVOVARNICK	NJPLS 35868
12/31/20	TED W. PIVOVARNICK	NJPLS 35868

I HEREBY CERTIFY THAT THIS MAP HAS BEEN REVISED UNDER MY IMMEDIATE SUPERVISION AND COMPLIES WITH THE LAWS OF THE STATE OF NEW JERSEY
Ted W. Pivovarnick
TED W. PIVOVARNICK
 N.J.P.L.S. NO. 35868

MATCH SHEET 2 LINE

LINE MATCH SHEET 3



THIS MAP HAS BEEN REDRAWN USING COMPUTER AIDED DRAFTING/DESIGN (CAD/D) BASED ON THE MAP PREPARED BY PHILIP J. VECERE, P.L.S., N.J. LIC. NO. 9884, DATED AUGUST 1961, LAST REVISED BY ARTHUR SWENSON, JR., P.L.S., N.J. LIC. NO. 30753, DATED AUGUST 31, 1989.

REVISIONS		
DATE	NAME	N.J. LIC. NO.
09/01/05	CHARLES E. SZOVATI	GS-35887
02/06/09	CHARLES E. SZOVATI	GS-35887
12/31/10	FREDERICK A. CRUCLU	N.J.P.E.&S 19093
11/30/12	FREDERICK A. CRUCLU	N.J.P.E.&S 19093
12/31/13	FREDERICK A. CRUCLU	N.J.P.E.&S 19093
12/31/14	FREDERICK A. CRUCLU	N.J.P.E.&S 19093
12/31/15	TED W. PIVOARNICK	N.J.P.L.S 35868
12/31/16	TED W. PIVOARNICK	N.J.P.L.S 35868
12/31/17	TED W. PIVOARNICK	N.J.P.L.S 35868
12/31/18	TED W. PIVOARNICK	N.J.P.L.S 35868
12/31/19	TED W. PIVOARNICK	N.J.P.L.S 35868
12/31/20	TED W. PIVOARNICK	N.J.P.L.S 35868

I HEREBY CERTIFY THAT THIS MAP HAS BEEN REVISED UNDER MY IMMEDIATE SUPERVISION AND COMPLIES WITH THE LAWS OF THE STATE OF NEW JERSEY

Ted W. Pivoarnick

TED W. PIVOARNICK
N.J.P.L.S. NO. 35868

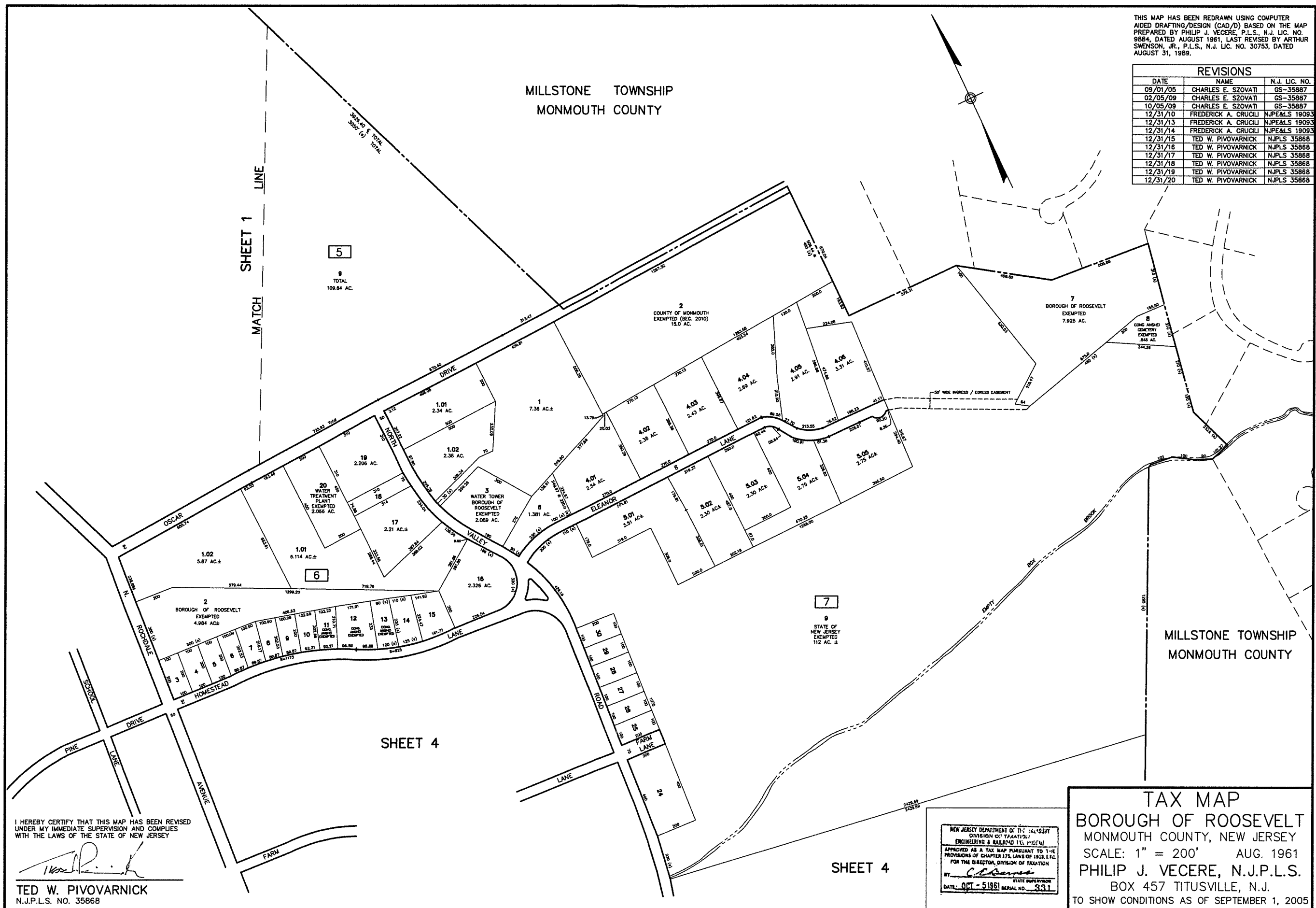
NEW JERSEY DEPARTMENT OF TREASURY
DIVISION OF TAXATION
ENGINEERING & RAILROAD TAXATION
APPROVED AS A TAX MAP PURSUANT TO THE PROVISIONS OF CHAPTER 175, LAWS OF 1913, ETC. FOR THE DIRECTOR, DIVISION OF TAXATION
BY: *C. Vecere*
DATE: OCT - 5 1961 SERIAL NO. 931

TAX MAP
BOROUGH OF ROOSEVELT
MONMOUTH COUNTY, NEW JERSEY
SCALE: 1" = 200' AUG. 1961
PHILIP J. VECERE, N.J.P.L.S.
BOX 457 TITUSVILLE, N.J.
TO SHOW CONDITIONS AS OF SEPTEMBER 1, 2005

MILLSTONE TOWNSHIP
MONMOUTH COUNTY

THIS MAP HAS BEEN REDRAWN USING COMPUTER AIDED DRAFTING/DESIGN (CAD/D) BASED ON THE MAP PREPARED BY PHILIP J. VECERE, P.L.S., N.J. LIC. NO. 9884, DATED AUGUST 1961, LAST REVISED BY ARTHUR SWENSON, JR., P.L.S., N.J. LIC. NO. 30753, DATED AUGUST 31, 1989.

REVISIONS		
DATE	NAME	N.J. LIC. NO.
09/01/05	CHARLES E. SZOVATI	GS-35887
02/05/09	CHARLES E. SZOVATI	GS-35887
10/05/09	CHARLES E. SZOVATI	GS-35887
12/31/10	FREDERICK A. CRUCI	N.J.P.E.&L.S. 19093
12/31/13	FREDERICK A. CRUCI	N.J.P.E.&L.S. 19093
12/31/14	FREDERICK A. CRUCI	N.J.P.E.&L.S. 19093
12/31/15	TED W. PIVOVARNICK	N.J.P.L.S. 35868
12/31/16	TED W. PIVOVARNICK	N.J.P.L.S. 35868
12/31/17	TED W. PIVOVARNICK	N.J.P.L.S. 35868
12/31/18	TED W. PIVOVARNICK	N.J.P.L.S. 35868
12/31/19	TED W. PIVOVARNICK	N.J.P.L.S. 35868
12/31/20	TED W. PIVOVARNICK	N.J.P.L.S. 35868



I HEREBY CERTIFY THAT THIS MAP HAS BEEN REVISED UNDER MY IMMEDIATE SUPERVISION AND COMPLIES WITH THE LAWS OF THE STATE OF NEW JERSEY

Ted W. Pivovarnick

TED W. PIVOVARNICK
N.J.P.L.S. NO. 35868

NEW JERSEY DEPARTMENT OF TREASURY
DIVISION OF TAXATION
ENGINEERING & SURVEYING
APPROVED AS A TAX MAP PURSUANT TO THE PROVISIONS OF CHAPTER 175, LAWS OF 1912, ETC. FOR THE DIRECTOR, DIVISION OF TAXATION

Philip J. Vecere

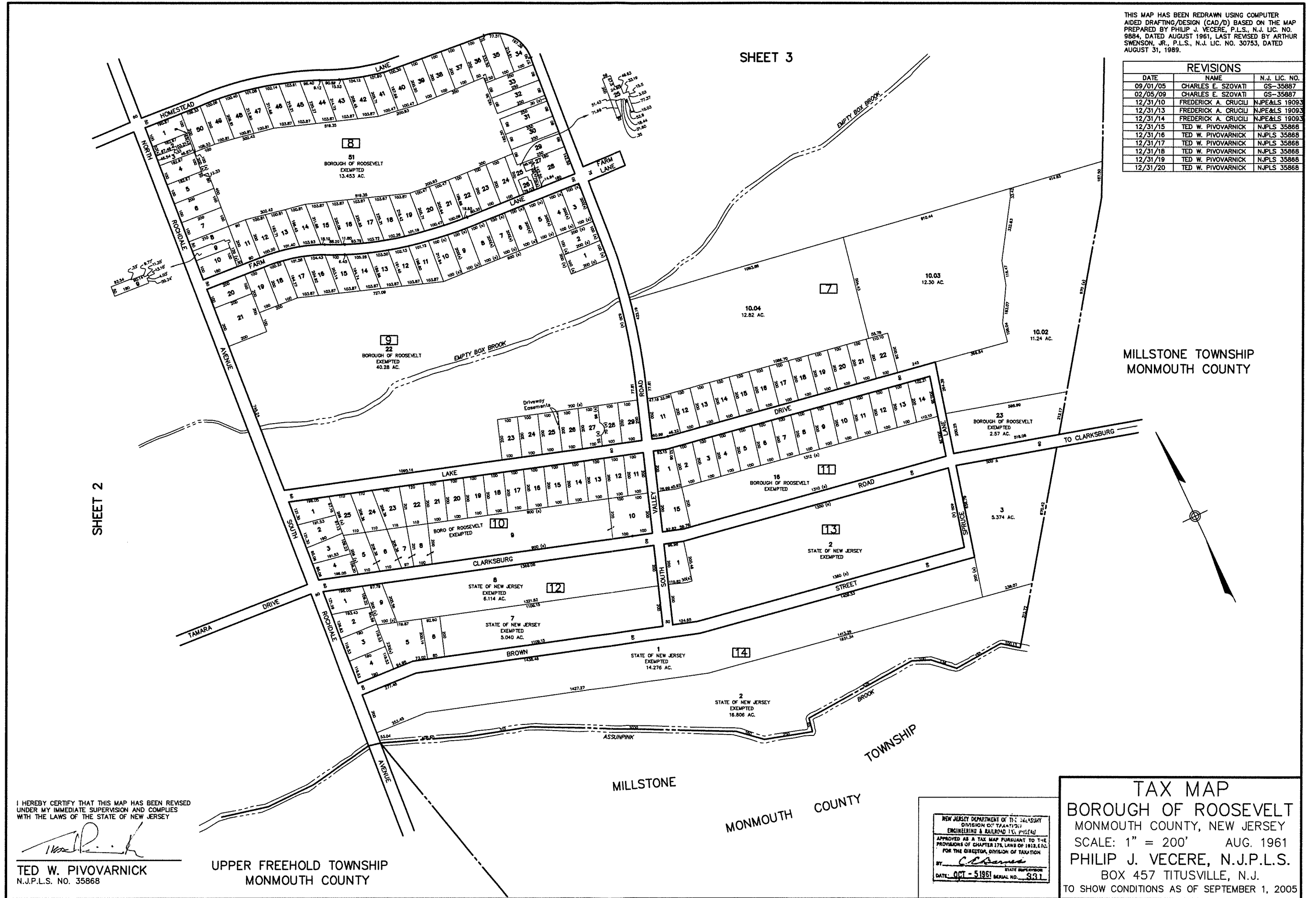
DATE: OCT - 5 1961 SERIAL NO. 331

TAX MAP
BOROUGH OF ROOSEVELT
MONMOUTH COUNTY, NEW JERSEY
SCALE: 1" = 200' AUG. 1961
PHILIP J. VECERE, N.J.P.L.S.
BOX 457 TITUSVILLE, N.J.
TO SHOW CONDITIONS AS OF SEPTEMBER 1, 2005

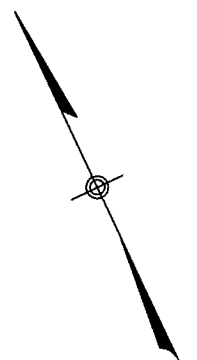
SHEET 3

THIS MAP HAS BEEN REDRAWN USING COMPUTER AIDED DRAFTING/DESIGN (CAD/D) BASED ON THE MAP PREPARED BY PHILIP J. VECERE, P.L.S., N.J. LIC. NO. 9884, DATED AUGUST 1961, LAST REVISED BY ARTHUR SWENSON, JR., P.L.S., N.J. LIC. NO. 30753, DATED AUGUST 31, 1989.

REVISIONS		
DATE	NAME	N.J. LIC. NO.
09/01/05	CHARLES E. SZOVATI	GS-35887
02/05/09	CHARLES E. SZOVATI	GS-35887
12/31/10	FREDERICK A. CRUCILI	NJPE&LS 19093
12/31/13	FREDERICK A. CRUCILI	NJPE&LS 19093
12/31/14	FREDERICK A. CRUCILI	NJPE&LS 19093
12/31/15	TED W. PIVOVARNICK	NJPLS 35868
12/31/16	TED W. PIVOVARNICK	NJPLS 35868
12/31/17	TED W. PIVOVARNICK	NJPLS 35868
12/31/18	TED W. PIVOVARNICK	NJPLS 35868
12/31/19	TED W. PIVOVARNICK	NJPLS 35868
12/31/20	TED W. PIVOVARNICK	NJPLS 35868



MILLSTONE TOWNSHIP
MONMOUTH COUNTY



SHEET 2

I HEREBY CERTIFY THAT THIS MAP HAS BEEN REVISED UNDER MY IMMEDIATE SUPERVISION AND COMPLIES WITH THE LAWS OF THE STATE OF NEW JERSEY

Ted W. Pivovarnick
TED W. PIVOVARNICK
 N.J.P.L.S. No. 35868

UPPER FREEHOLD TOWNSHIP
MONMOUTH COUNTY

MILLSTONE

MONMOUTH COUNTY

TOWNSHIP

NEW JERSEY DEPARTMENT OF TREASURY
 DIVISION OF TAXATION
 ENGINEERING & RAILROAD TITLE DIVISION
 APPROVED AS A TAX MAP PURSUANT TO THE PROVISIONS OF CHAPTER 178, LAWS OF 1912, E.T.C. FOR THE DIRECTOR, DIVISION OF TAXATION
 BY *Philip J. Vecere*
 STATE SUPERVISOR
 DATE: OCT - 5 1961 SERIAL NO. 331

TAX MAP
BOROUGH OF ROOSEVELT
 MONMOUTH COUNTY, NEW JERSEY
 SCALE: 1" = 200' AUG. 1961
PHILIP J. VECERE, N.J.P.L.S.
 BOX 457 TITUSVILLE, N.J.
 TO SHOW CONDITIONS AS OF SEPTEMBER 1, 2005